

# EX#12(B)

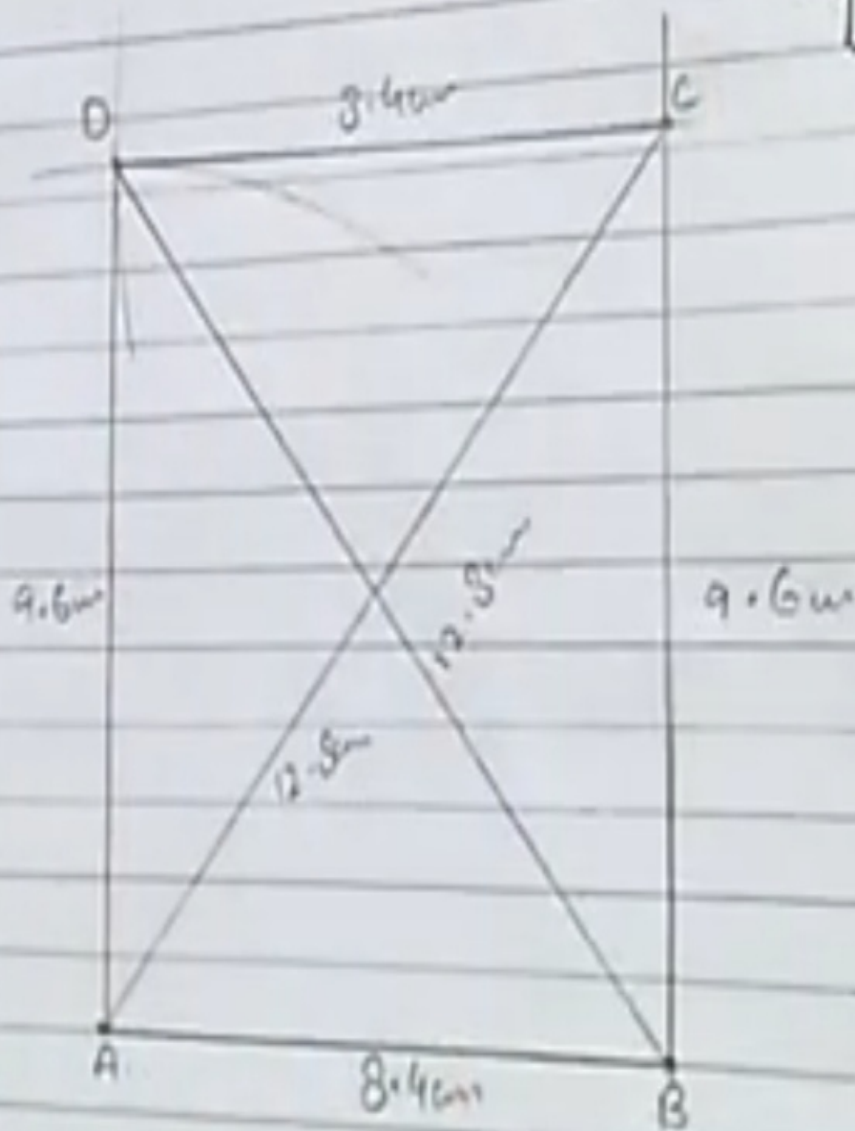
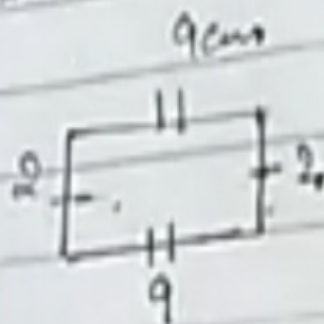
## Q#2

②

$$84 \text{ mm} = \frac{84}{10}$$

$$8.4 \text{ cm}$$

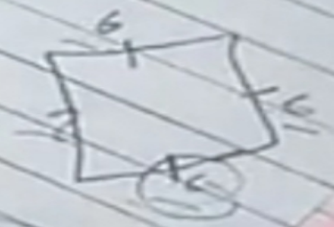
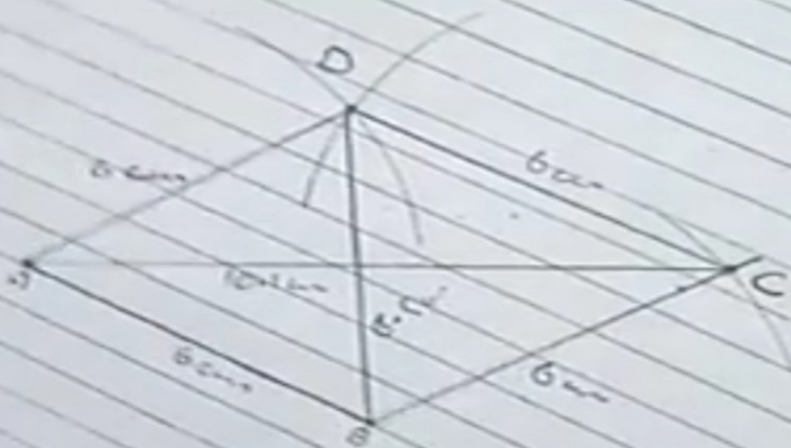
$$96 \text{ mm} = \frac{96}{10} = 9.6 \text{ cm}$$



# Q#3

Ex. # 12 B

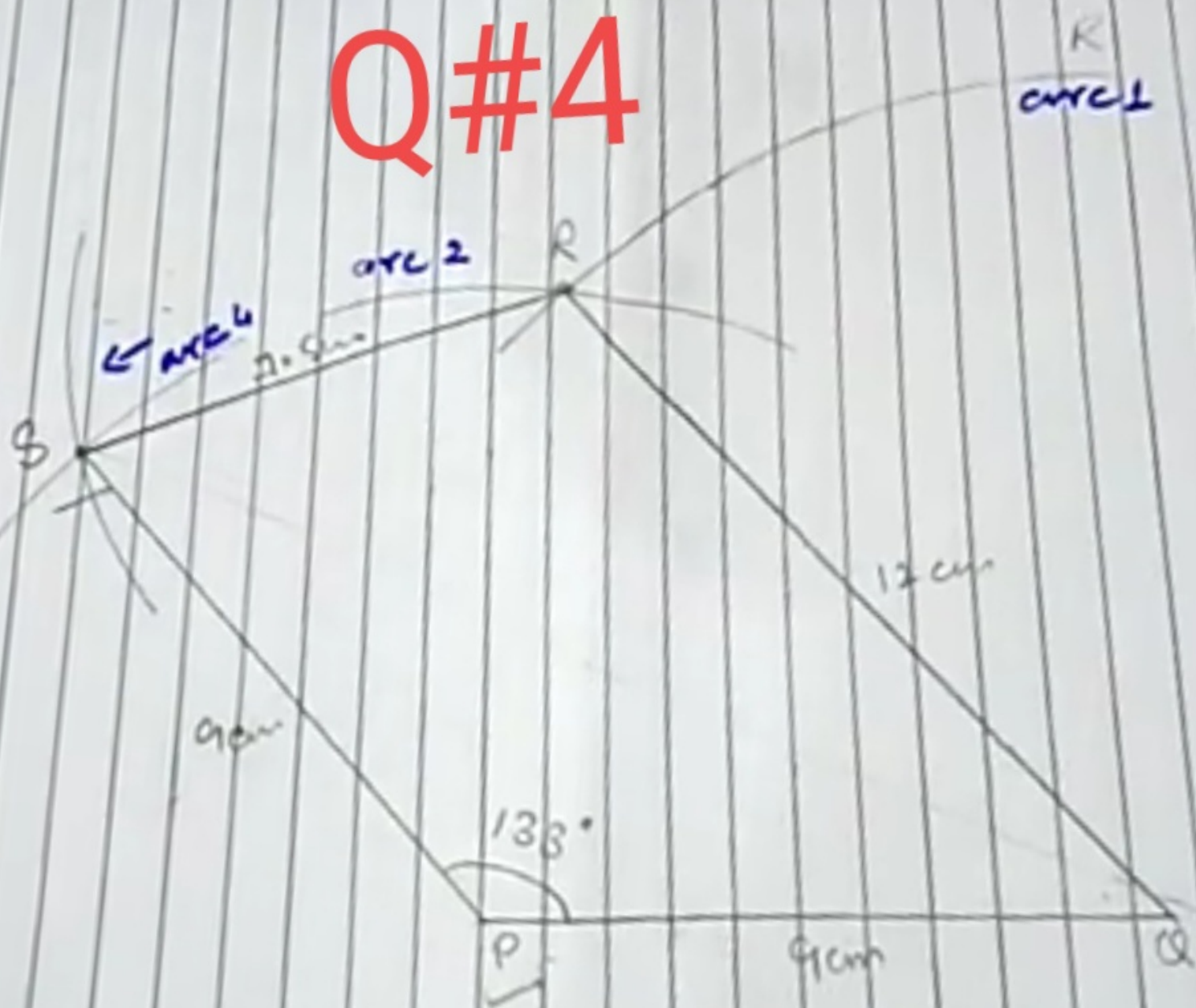
(INSM1)



$AB = 6 \text{ cm}$   
 $B = [115]$

Ex# 12B

Q#4





$$P_1 = \frac{9 \text{ mm}}{0.10} = 90 \text{ mm} = 6 \text{ cm}$$

$$P_2 = \frac{9 \text{ mm}}{0.10} = 90 \text{ mm} = 6 \text{ cm}$$

$$P_3 = \frac{9 \text{ mm}}{0.10} = 90 \text{ mm} = 6 \text{ cm}$$

Q#5



Q#6